

doughXpress

Model No. TXM-15CP

Little Chick Manual Meat Press



BEFORE

AFTER

DIMENSIONS

Width: 16 1/2 inches, 41.91 centimeters

Height: 15-1/4 inches, 38.74 centimeters

Depth: 23-5/8 inches, 60.01 centimeters

WEIGHT

Shipping: 68 lbs.

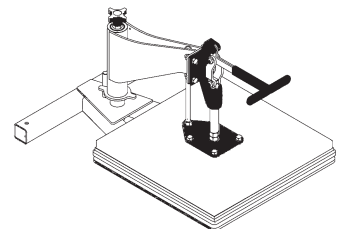
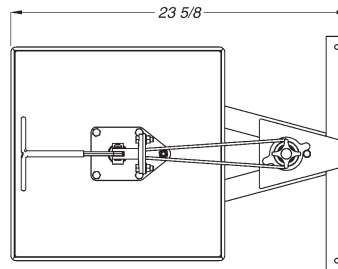
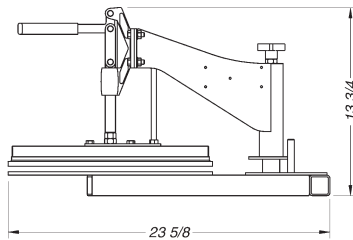
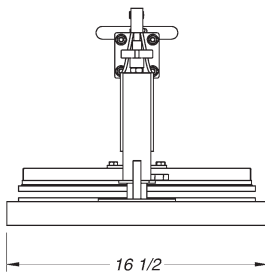
EXTERIOR

Appliance White

The TXM-15CP model is the fastest and easiest meat press to use. The swing away design makes loading and removing the meat easy. Set the thickness and it will give you consistent results every time, giving you a more consistent cook time and increasing center of the plate coverage. Expand your kitchen offerings with this lightweight, easy to use "little chick."

TXM-15CP Manual Meat Press Features:

- 15" x 15" platens.
- Standard Xylan® non-stick coating on upper and lower platens
- Swing away design for easy placement of your cutlets/breasts.
- Process up to four at a time.
- Produce over 700 pieces per hour.
- Perfect for chicken, pork and veal.
- Light weight.
- Adjustable thickness dial.
- Optional stainless steel cart with casters available.



doughXpress
HIX Corporation Food Division
Product improvement may require us to change specifications without notice.
Revised April 2009

DOUGHXPRESS
1201 E. 27th Terrace
Pittsburg, KS 66762 USA

Toll Free: (800) 835-0606 ext.205
Tel: (620) 231-8568 ext.205
Fax: (866) 565-3189

doughxpress@hixcorp.com or visit www.doughxpress.com